



COLLEGE *IN* HIGH SCHOOL

2026-2027 Berkeley County

Partnership with

BlueRidge +

COMMUNITY AND
TECHNICAL COLLEGE



ABOUT COLLEGE IN HIGH SCHOOL

Blue Ridge Community and Technical College and Berkeley County Schools have created several options for high school students to begin the college experience while in high school. With discounted college tuition, along with ease of scheduling, high school students have several options to get the “JumpStart.”

THIS VIEWBOOK EXPLORES THE VARIOUS OPTIONS TO GET THE JUMPSTART.

Agribusiness*	Page 4
Applied Laboratory Technician*	Page 5
Business Administration*	Page 6
Culinary Arts*	Page 7
Cyber Security*	Page 8
Digital Media Specialist*	Page 9
Early Childhood Specialist*	Page 10
Education*	Page 11
Electric Distribution Engineering Technology*	Page 12
General Studies	Page 13
Health Care Professionals*	Page 14
Information Technology*	Page 15
Mechatronics and Engineering Technology*	Page 16
Software Development*	Page 17
Why Enroll	Page 19
Transfer College in High School	Page 20
How to Enroll and FAQ	Page 21

** Eligible for LevelUp Funding. See page 19 for details.*

MISSION STATEMENT

Blue Ridge Community and Technical College provides our diverse student population with life-changing education, training, and services that drive economic development within the communities we serve.



www.BlueRidgeCTC.edu
304.260.4380

JumpStart Programs

Agribusiness

Embark on a journey through the heart of the agricultural world with our captivating JumpStart Agribusiness track! This immersive experience is your gateway to the fascinating realm of Agribusiness and serves as your launching pad towards an Associate of Applied Science degree in this exciting field.



Our curriculum seamlessly blends essential general education concepts with immersive introductory Agribusiness coursework. It's a unique opportunity to not only gain foundational knowledge but also dive headfirst into the thrilling intricacies of Agribusiness.

What sets our JumpStart program apart is its alignment with the coveted Associate of Applied Science degree in Agribusiness, a qualification that opens doors to a multitude of opportunities. Best of all, this academic journey isn't just a stepping stone—it's a bridge to top-tier four-year universities where your Agribusiness dreams can truly take root and flourish. Don't miss your chance to cultivate your passion for Agribusiness in an environment where growth and opportunity are boundless!

BRCTC Course	Course Name	Credits	Berkeley County Credit
ENGL 101	English Composition I	3	1/2 Senior English
BIOL 101	General Biological Science I & Lab	4	1/2 Senior Science
AGRB 101	Agribusiness Introduction	3	1/2 Elective
**MATH 100	Math Essentials	3	1/2 Senior Math
Total Fall Credits:		13	

BRCTC Course	Course Name	Credits	Berkeley County Credit
ENGL 110	Technical Writing	3	1/2 Senior English
BIOL 102	General Biological Science II & Lab	4	1/2 Senior Science
AGRB 226	Principles of Sustainable Ag.	3	1/2 Elective
MATH 101	Intro. to Mathematics	3	1/2 Senior Math
Total Spring Credits:		13	

Based on AY 26 \$50/HS credit hour*, the estimated tuition and course fees for Agribusiness: \$1,510 (reflects tuition and Fee estimate for full year). Books are purchased separately. The College bookstore offers several options including New, Used, Rent, and E-Books. *Tuition and curriculum subject to change. **Math course selected based on ACT, SAT, or placement. Student exceeding required math test score may be offered a higher level Math course, such as Math 154 Finite Math or Math 114 Probability and Statistics.



Applied Laboratory Technician

Quality Control and Quality Assurance Technicians are the individuals responsible for making sure our products are safe and properly made. This is a high demand, well-paying field with positions found in food processing, pharmaceutical, and manufacturing plants. Students receive hands-on training on operating cutting-edge analysis equipment and preparing industry accepted journals. Students receive their OSHA 30 General Industry credential which further qualifies them for employment directly out of the program. Get yourself on the fast track to an A.A.S. college degree with earning 31 college credits in this JumpStart program.

BRCTC Course	Course Name	Credits	Berkeley County Credit
ENGL 101	English Composition I	3	1/2 Senior English
LTEC 101	Laboratory Technician I	4	1/2 Elective
LTEC 111	Laboratory Technician III	2	1/2 Elective
CAS 111	Information Literacy	3	1/2 Elective
**MATH 100	Math Essentials	3	1/2 Senior Math
Total Fall Credits:		15	

BRCTC Course	Course Name	Credits	Berkeley County Credit
ENGL 110	Technical Writing	3	1/2 Senior English
LTEC 102	Laboratory Technician II	4	1/2 Elective
LTEC 112	Laboratory Technician IV	3	1/2 Elective
COMM 205	Professional Communications	3	1/2 Elective
MATH 101	Introduction to Mathematics	3	1/2 Senior Math
Total Spring Credits:		16	

Based on AY 26 \$50/HS credit hour, the estimated tuition and course fees for Applied Lab Technician: \$2,194 (reflects tuition and fee estimate for full year). Books are purchased separately. The College bookstore offers several options including New, Used, Rent, and E-Books. *Tuition and curriculum subject to change. **Math course selected based on ACT, SAT, or placement. Student exceeding required math test score may be offered a higher level Math course, such as Math 154 Finite Math or Math 114 Probability and Statistics.*



Business Administration

Every industry has the need for high level professionals who are diverse in their skills. The Business Administration program is designed for students who want to transfer to a four-year university and major in Business. This JumpStart program focuses on general studies with Introduction to Marketing.

BRCTC Course	Course Name	Credits	Berkeley County Credit
ENGL 101	English Composition I	3	1/2 Senior English
PHYS 103	General Physical Science I	4	1/2 Senior Science
HIST 202	US History Since 1877	3	1/2 Elective
**MATH 100A	Algebra Essentials	3	1/2 Senior Math
Total Fall Credits:		13	

BRCTC Course	Course Name	Credits	Berkeley County Credit
ENGL 102	English Composition II	3	1/2 Senior English
PHYS 104	General Physical Science II	4	1/2 Senior Science
BUSN 231	Marketing	3	1/2 Elective
MATH 105	Algebra	3	1/2 Senior Math
Total Spring Credits:		13	

Based on AY 26 \$50/HS credit hour, the estimated tuition and course fees for Business Administration: \$1,510 (reflects tuition and Fee estimate for full year). Books are purchased separately. The College bookstore offers several options including New, Used, Rent, and E-Books. *Tuition and curriculum subject to change. **Math course selected based on ACT, SAT, or placement. Student exceeding required math test score may be offered a higher level Math course, such as Math 154 Finite Math or Math 114 Probability and Statistics.*



Culinary Arts

Culinary Arts provides practical knowledge and skills necessary for an entry level position in the food service and hospitality industry. Students will learn culinary skills based on classic French cuisine, portion control, and knife skill techniques. Baking fundamentals provides the skills needed for an entry level bakery position. Students will learn scaling, measuring and mixing techniques. This program also provides a basic overview of food safety, nutrition and presentation. With completion, students can choose pathways to Baking and Pastry, Food Service Retail Management, Catering and Hospitality, and Culinary Arts.

BRCTC Course	Course Name	Credits	Berkeley County Credit
ENGL 101	English Composition I	3	1/2 Senior English
CART 245/245L	Cooking Fundamentals	4	1/2 Elective
CAS 111	Information Literacy	3	1/2 Elective
**MATH 100	Math Essentials	3	1/2 Senior Math
Total Fall Credits:		10	

BRCTC Course	Course Name	Credits	Berkeley County Credit
ENGL 110	Technical Writing & Communications	3	1/2 Senior English
MATH 101	Introduction to Mathematics	3	1/2 Senior Math
CART 212	Baking Skills & Development	4	1/2 Elective
COMM 205	Professional Communications	3	1/2 Elective
Total Spring Credits:		13	

Based on AY 26 \$50/HS credit hour, the estimated tuition and course fees for Culinary: \$2,235 (reflects tuition and Fee estimate for full year). Culinary textbooks and uniform are provided. General education textbooks are purchased separately. The College bookstore offers several options including New, Used, Rent, and E-Books. *Tuition and curriculum subject to change.*

***Math course selected based on ACT, SAT, or placement. Student exceeding required math test score may be offered a higher level Math course, such as Math 154 Finite Math or Math 114 Probability and Statistics.*



Cyber Security

Some of the greatest threats to our National Security are attacks against computers and networks. With Cyber Security, students are prepared to work frontline in a wide range of industries securing the systems. This JumpStart program will include general studies along with entry level Information Security courses.

***Tuition, fees and textbooks for this program are covered by a WORC 5 grant.**

BRCTC Course	Course Name	Credits	Berkeley County Credit
ENGL 101	English Composition I	3	1/2 Senior English
CAS 111	Information Literacy	3	1/2 Elective
SDE 188	Intro. to Programming Logic	3	1/2 Elective
CNET 111	Network Fundamentals	3	1/2 Elective
**MATH 100A	Algebra Essentials	3	1/2 Senior Math
Total Fall Credits:		15	

BRCTC Course	Course Name	Credits	Berkeley County Credit
ENGL 110	Technical Writing	3	1/2 Senior English
IT 185	Intro. to Linux	3	1/2 Elective
CYBR 101	Intro. to Cyber Security	3	1/2 Elective
IT 105	Computer Ethics	3	1/2 Elective
MATH 105	College Algebra	3	1/2 Senior Math
Total Spring Credits:		15	

Based on AY 26 \$50/HS credit hour*, the estimated tuition and course fees for Cybersecurity: \$2,160 (reflects tuition and Fee estimate for full year). Books are purchased separately. The College bookstore offers several options including New, Used, Rent, and E-Books. *Tuition and curriculum subject to change. **Math course selected based on ACT, SAT, or placement. Student exceeding required math test score may be offered a higher level Math course, such as Math 154 Finite Math or Math 114 Probability and Statistics.



Digital Media Specialist

As technology has changed, computer-based media has become a popular communication technology. The Digital Media Specialist program introduces students to digital communications involving web applications and business-centered official applications. Students are also introduced to basic PC troubleshooting and help desk technical skills. This program focuses on informational, business, commercial entertainment, and digital applications.

BRCTC Course	Course Name	Credits	Berkeley County Credit
MDIA 101	Intro. to Media Studies	3	1/2 Elective
SDE 188	Intro. to Programming Logic	3	1/2 Elective
CAS 111	Information Literacy	3	1/2 Elective
ENGL 101	English Composition I	3	1/2 Senior English
**MATH 100A	Algebra Essentials	3	1/2 Senior Math
Total Fall Credits:		15	

BRCTC Course	Course Name	Credits	Berkeley County Credit
MDIA 104	Web Page Design	3	1/2 Elective
IT 105	Computer Ethics	3	1/2 Elective
MDIA 102	Intro. to Adobe Photoshop	3	1/2 Elective
ENGL 110	Technical Writing	3	1/2 Senior English
MATH 105	College Algebra	3	1/2 Senior Math
Total Spring Credits:		15	

Based on AY 26 \$50/HS credit hour, the estimated tuition and course fees for Digital Media Studies: \$2,085 (reflects tuition and Fee estimate for full year). Books are purchased separately. The College bookstore offers several options including New, Used, Rent, and E-Books. *Tuition and curriculum subject to change. **Math course selected based on ACT, SAT, or placement. Student exceeding required math test score may be offered a higher level Math course, such as Math 154 Finite Math or Math 114 Probability and Statistics.*



Early Childhood Specialist

The Early Childhood Specialist program prepares students with the skills and framework for potential employment within an early childcare facility. The program is for students who want to work with children from birth to age 6. JumpStart students have the potential to earn 30 college credit hours. Students will have employment opportunities that include: lead child care center teachers, teacher aides, child care center directors, Head Start Programs, private nursery school or a Nanny. In addition, this program is recognized by the WV Department of Education to meet the requirements of teacher aide employment in WV counties.

BRCTC Course	Course Name	Credits	Berkeley County Credit
ECED 107	Early Childhood Curriculum	3	1/2 Elective
ECED 103	Early Language and Literature	3	1/2 Elective
ECED 105	Child Development	3	1/2 Elective
ENGL 101	English Composition I	3	1/2 Senior English
MATH 100	Math Essentials	3	1/2 Senior Math
Total Fall Credits:		15	

BRCTC Course	Course Name	Credits	Berkeley County Credit
ECED 165	Assessment of Young Children	3	1/2 Elective
ECED 220	Early Childhood Inclusion	3	1/2 Elective
ECED 206	Family/Community Engagement	3	1/2 Elective
ENGL 110	Tech Writing & Communication	3	1/2 Senior English
MATH 101	Intro. to Mathematics	3	1/2 Senior Math
Total Fall Credits:		15	

Based on AY 26 \$50/HS credit hour, the estimated tuition and course fees for Early Childhood Specialist: \$1,710 (reflects tuition and Fee estimate for full year). Books are purchased separately. The College bookstore offers several options including New, Used, Rent, and E-Books. *Tuition and curriculum subject to change. **Math course selected based on ACT, SAT, or placement. Student exceeding required math test score may be offered a higher level Math course, such as Math 154 Finite Math or Math 114 Probability and Statistics.*



Education

The JumpStart Education track addresses introductory topics related to teaching and learning and prepares students for transfer to an upper-division program leading to professional licensure or certification. Students will complete general education courses with foundational education courses. This program is aligned with the Associate of Science degree that will directly transfer to Shepherd University.

**The Education JumpStart is part of the Berkeley County Grow Your Own program. Funding is available to students to cover the cost of tuition.*

BRCTC Course	Course Name	Credits	Berkeley County Credit
ENGL 101	English Composition I	3	1/2 Senior English
PHYS 103	General Physical Science I	4	1/2 Senior Science
EDUC 150	Seminar in Education	1	1/2 Elective
or COMM 202	Fundamentals of Speech	3	1/2 Elective
**MATH 100A	Algebra Essentials	3	1/2 Senior Math
Total Fall Credits:		13	

BRCTC Course	Course Name	Credits	Berkeley County Credit
ENGL 102	English Composition II	3	1/2 Senior English
PHYS 104	General Physical Science II	4	1/2 Senior Science
MATH 105	College Algebra	3	1/2 Senior Math
EDUC 200	Foundations of Education	3	1/2 Elective
Total Spring Credits:		13	

Based on AY 26 \$50/HS credit hour, the estimated tuition and course fees for Education: \$1,535 (reflects tuition and Fee estimate for full year). Books are purchased separately. The College bookstore offers several options including New, Used, Rent, and E-Books. *Tuition and curriculum subject to change. **Math course selected based on ACT, SAT, or placement. Student exceeding required math test score may be offered a higher level Math course, such as Math 154 Finite Math or Math 114 Probability and Statistics.*



Electric Distribution Engineering Technology

This JumpStart program is designed to be an introductory program of the Lineworker program. Lineworkers are the first line responders who work to keep “the lights on.” Electrical Distribution Engineering is a highly sought after career path providing lifelong opportunity.

BRCTC Course	Course Name	Credits	Berkeley County Credit
ENGL 101	English Composition I	3	1/2 Senior English
MECH 101/101L	Intro. to Mechatronics and Lab	3	1/2 Elective
MECH 110	Mechanical Systems	3	1/2 Elective
MECH 121	Safety Awareness & OSHA	2	1/2 Elective
**MATH 100	Math Essentials	3	1/2 Senior Math
Total Fall Credits:		14	

BRCTC Course	Course Name	Credits	Berkeley County Credit
ENGL 110	Technical Writing	3	1/2 Senior English
EDET 150	Fundamentals of Electricity	4	1/2 Elective
MECH 120	Fluid Power	3	1/2 Elective
MATH 101	Introduction to Mathematics	3	1/2 Senior Math
Total Spring Credits:		13	

Based on AY 26 \$50/HS credit hour, the estimated tuition and course fees for Electric Distribution: \$1,885 (reflects tuition and Fee estimate for full year). Books are purchased separately. The College bookstore offers several options including New, Used, Rent, and E-Books. *Tuition and curriculum subject to change. **Math course selected based on ACT, SAT, or placement. Student exceeding required math test score may be offered a higher level Math course, such as Math 154 Finite Math or Math 114 Probability and Statistics.*



General Studies

The General Studies program offers students the foundation for a wide variety of majors at Blue Ridge CTC allowing students to direct their scholarship toward a career and program of study of their choosing. Courses in composition, algebra, lab science, and social studies provide a basis for ongoing academic study.

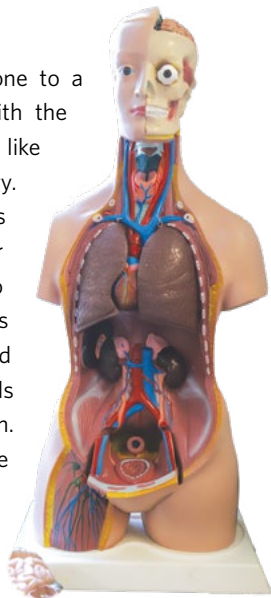
BRCTC Course	Course Name	Credits	Berkeley County Credit
ENGL 101	English Composition I	3	1/2 Senior English
PHYS 103	General Physical Science I	4	1/2 Senior Science
HIST 202	US History Since 1877	3	1/2 Elective
**MATH 100A	Algebra Essentials	3	1/2 Senior Math
Total Fall Credits:		13	

BRCTC Course	Course Name	Credits	Berkeley County Credit
ENGL 102	English Composition II	3	1/2 Senior English
MATH 105	College Algebra	3	1/2 Senior Math
PHYS 104	General Physical Science II	4	1/2 Senior Science
COMM 202	Fundamentals of Speech	3	1/2 Elective
Total Spring Credits:		13	

Based on AY 26 \$50/HS credit hour, the estimated tuition and course fees for General Studies: \$1,510 (reflects tuition and Fee estimate for full year). Books are purchased separately. The College bookstore offers several options including New, Used, Rent, and E-Books. *Tuition and curriculum subject to change. **Math course selected based on ACT, SAT, or placement. Student exceeding required math test score may be offered a higher level Math course, such as Math 154 Finite Math or Math 114 Probability and Statistics.*

Healthcare Professions

Our Healthcare Professions pathway is your stepping stone to a rewarding healthcare career. Our program equips you with the essential knowledge to succeed, focusing on key areas like medical terminology, human anatomy, and pharmacology. You will also have the opportunity to develop practical skills such as taking vitals and performing hands-only CPR. After completing this program, you will be well-positioned to continue your education at Blue Ridge, pursuing certificates or degrees in Medical Assisting, Nursing, Paramedicine, and Physical Therapy Assisting. Completing this pathway fulfills the course prerequisites for Blue Ridge's Nursing program. This means JumpStart students may be able to apply to the Nursing program while still in their senior year of high school,



Visit: www.blueridgectc.edu/ApplyToNursing to learn more about application requirements and deadlines.

BRCTC Course	Course Name	Credits	Berkeley County Credit
ENGL 101	English Composition I	3	1/2 Senior English
BIOL 120/121	Human Anatomy & Physiology I	4	1/2 Senior Science
CAHS 106	Careers in Healthcare	0.5	Noncredit Workshop
MAST 102	Medical Terminology	3	1/2 Elective
**MATH 100	Math Essentials	3	1/2 Senior Math
Total Fall Credits:		13.5	

BRCTC Course	Course Name	Credits	Berkeley County Credit
ENGL 102	English Composition II	3	1/2 Senior English
BIOL 122/123	Human Anatomy & Physiology II	4	1/2 Senior Science
CAHS 106	Careers in Healthcare	0.5	Noncredit Workshop
CAHS 141	Introduction to Pharmacology	3	1/2 Elective
MATH 101	Introduction to Mathematics	3	1/2 Senior Math
Total Spring Credits:		13.5	

Based on AY 26 \$50/HS credit hour, the estimated tuition and course fees for Healthcare: \$1,510 (reflects tuition and Fee estimate for full year). Books are purchased separately. The College bookstore offers several options including New, Used, Rent, and E-Books. *Tuition and curriculum subject to change. **Math course selected based on ACT, SAT, or placement. Student exceeding required math test score may be offered a higher level Math course, such as Math 154 Finite Math or Math 114 Probability and Statistics.



Information Technology

The Information Technology program prepares the student for achievement in a high-demand field. The program's flexibility gives students a background in computer technology, an array of vendor certification training choices, and numerous internship opportunities. This program hones student skills in troubleshooting and repair, hardware, networking, web development, and basic programming.

***Tuition, fees and textbooks for this program are covered by a WORC 5 grant.**

BRCTC Course	Course Name	Credits	Berkeley County Credit
IT 102	IT Fundamentals	3	1/2 Elective
SDE 188	Intro. to Programming Logic	3	1/2 Elective
CAS 111	Information Literacy	3	1/2 Elective
ENGL 101	English Composition I	3	1/2 Senior English
**MATH 100A	Algebra Essentials	3	1/2 Senior Math
Total Fall Credits:		15	

BRCTC Course	Course Name	Credits	Berkeley County Credit
IT 185	Intro. to Linux	3	1/2 Elective
IT 105	Computer Ethics	3	1/2 Elective
CYBR 101	Intro. to Cybersecurity	3	1/2 Elective
ENGL 110	Technical Writing	3	1/2 Senior English
MATH 105	College Algebra	3	1/2 Senior Math
Total Spring Credits:		15	

Based on AY 26 \$50/HS credit hour, the estimated tuition and course fees for Information Technology: \$2,175 (reflects tuition and Fee estimate for full year). Books are purchased separately. The College bookstore offers several options including New, Used, Rent, and E-Books. *Tuition and curriculum subject to change. **Math course selected based on ACT, SAT, or placement. Student exceeding required math test score may be offered a higher level Math course, such as Math 154 Finite Math or Math 114 Probability and Statistics.*



Mechatronics and Engineering Technologies

Engineering Technology, Heavy Equipment, Mechatronics, or Plastics Engineering Technology

The Mechatronics and Engineering Technology track is designed to prepare students for a challenging and exciting career as a high-tech problem solver. This program is a blend of classroom and active, hands-on courses. Completers of the Mechatronics and Engineering Technology pathway will be prepared to pursue their Associate of Applied Science degree in Engineering Technology, Heavy Equipment Technician, Mechatronics, or Plastics Engineering Technology.

***Tuition, fees and textbooks for this program are covered by a WORC 5 grant.**

BRCTC Course	Course Name	Credits	Berkeley County Credit
ENGL 101	English Composition I	3	1/2 Senior English
MECH 101/101L	Introduction to Mechatronics	3	1/2 Elective
MECH 110	Mechanical Systems	3	1/2 Elective
MECH 121	Safety Awareness & OSHA	2	1/2 Elective
**MATH 100A	Algebra Essentials	3	1/2 Senior Math
Total Fall Credits:		13	

BRCTC Course	Course Name	Credits	Berkeley County Credit
ENGL 110	Technical Writing	3	1/2 Senior English
MATH 105	College Algebra	3	1/2 Senior Math
MECH 106/106L	Electricity and Electronics & Lab	4	1/2 Elective
MECH 120	Fluid Power	3	1/2 Elective
Total Spring Credits:		14	

Based on AY 26 \$50/HS credit hour, the estimated tuition and course fees for Advanced Manufacturing: \$2,090. Books are purchased separately. The College bookstore offers several options including New, Used, Rent, and E-Books. *Tuition and curriculum subject to change.*

***Math course selected based on ACT, SAT, or placement. Student exceeding required math test score may be offered a higher level Math course, such as Math 154 Finite Math or Math 114 Probability and Statistics.*



Software Development

This program prepares students with practical skills and knowledge for entry-level positions within software engineering profession. Software engineering relates to the concept, design, implementation, deployment, and maintenance of software. The program will provide the theoretical fundamentals of software development along with the hands-on practical aspects and competencies required by the industry. The program is designed to support innovation through the application of software engineering principles that provides a solution-focused skill set to real world business needs and scenarios.

BRCTC Course	Course Name	Credits	Berkeley County Credit
ENGL 101	English Composition I	3	1/2 Senior English
CAS 111	Information Literacy	3	1/2 Elective
MDIA 104	Webpage Design	3	1/2 Elective
SDE 188	Intro. to Programming Logic	3	1/2 Elective
**MATH 100A	Algebra Essentials	3	1/2 Senior Math
**or MATH 154	Finite Mathematics		
Total Fall Credits:		15	

BRCTC Course	Course Name	Credits	Berkeley County Credit
ENGL 110	Technical Writing & Communications	3	1/2 Senior English
MATH 105	College Algebra	3	1/2 Senior Math
SDE 195	Programming in Python	3	1/2 Elective
IT 105	Computer Ethics	3	1/2 Elective
IT 185	Introduction to Linux	3	1/2 Elective
Total Spring Credits:		15	

Based on AY 26 \$50/HS credit hour, the estimated tuition and course fees for Software Development: \$2,160 (reflects tuition and Fee estimate for full year). Books are purchased separately. The College bookstore offers several options including New, Used, Rent, and E-Books. *Tuition and curriculum subject to change. **Math course selected based on ACT, SAT, or placement. Student exceeding required math test score may be offered a higher level Math course, such as Math 154 Finite Math or Math 114 Probability and Statistics.*

Why and How To Enroll

Transfer College in High School

Frequently Asked Questions

Why Enroll?

Funding For JumpStart Programs

LevelUp is a West Virginia state program that provides funding to high school dual enrollment for eligible tuition and fees. Students must be West Virginia residents to qualify. Funding is subject to annual program continuation year-to-year.

Eligible programs include: Agribusiness, Applied Laboratory Technician, Business Administration, Culinary Arts, Cyber Security, Digital Media Studies, Early Childhood Specialist, Education, Electric Distribution Engineering Technology, Healthcare, Information Technology, Mechatronics, and Software Development.

Save Time

These programs allow students to take advantage of earning both college and high school credit. In addition, transportation is available for the JumpStart program. With classes that transfer, enter college with credits that will reduce time earning your degree.

Save Money \$\$

Enrolling in a College in High School program saves considerable time and money.

Sample	HS Rate	BRCTC Rate	Local 4 Year University
3 credit hour course	\$150	\$624	\$1013
<i>Sample course is tuition only; excludes lab fees and book costs</i>			

Enrolling into a JumpStart program can save students nearly \$4,400 (tuition costs only).

*AY 26 \$50/HS credit hour is set by the WVCTCS annually and may be subject to increase.

**\$208/credit hour is the AY 25-26 Blue Ridge CTC per credit hour rate. May be subject to increase subsequent academic semesters.

High school students must reside in West Virginia or one of our designated Metro counties to receive the \$50/credit hour rate. Students who do not meet this residency criteria are assessed at the out-of-state tuition rate.

How to Enroll:

1. Discuss scheduling options with High School Counselor.
2. Meet with a Blue Ridge CTC College in High School Contact:

High School Enrollment Counselor

Call: 304.260.4380 ext.2113

Text: 304.398.6718

Email: highschool@blueridgectc.edu

3. Students who would like to register for the College in the High School courses can complete the High School Programming/Dual Enrollment registration form and submit it in person or via email, fax, or regular mail to Blue Ridge CTC.
4. Attend High School Program Orientation and complete any required course placement testing. Class sizes are limited and may require an interview process.
5. Start Classes!

Frequently Asked Questions

Does the College report attendance?

Student attendance is collected and reported to Berkeley County Schools daily. Students are expected to regularly attend courses. Student attendance issues are reported to respective high schools for early intervention.

Are there scholarships available?

Financial assistance in the form of scholarships are available for JumpStart programming. An application is required and students must prove financial need. To apply for a scholarship, please contact Blue Ridge CTC's High School Enrollment Counselor:

Call: 304.260.4380 ext. 2113

Text: 304.398.6718

Email: highschool@blueridgectc.edu

What happens if I am unsuccessful in my courses?

Blue Ridge CTC provides a variety of student services to promote success within the JumpStart Programs. Students who begin falling behind are referred for tutoring assistance. If all other means have been exhausted, high school counselors work with individual students to find alternative senior scheduling solutions.

When are bills due?

Bills are due the week before courses begin each semester. Students may pay bills through BRIDGE, pay in person on campus, or pay over the phone by calling the finance office at 304.260.4380 ext. 2218.

How do I buy books?

Students can find book lists by visiting the Blue Ridge CTC Bookstore website through eCampus. Books are listed by course name and section, and all course materials are displayed. Students purchasing books must ensure textbook ISBN numbers match the listing on the eCampus website.

What is a prerequisite?

A prerequisite is an academic requirement that must be satisfied before enrollment in a desired class. Prerequisites might include other courses, a minimum GPA, placement testing, or upper-division standing.

Why do I have to take a prerequisite course in JumpStart?

The JumpStart programs are designed to be as inclusive as possible. Prerequisite courses are included in the programs to ensure all students have a solid foundation and are not excluded due to a lack of required test scores. Exceptions to prerequisite courses may be made on a case-by-case basis.

Will 100 level courses count toward my degree?

At Blue Ridge, Math 100 and Math 100A are offered for college credit. Students can use these three credit hours as electives toward a degree at BRCTC. Students who plan to transfer must check with the receiving institution to determine if and how these courses may transfer to another school.

How/will my classes transfer from Blue Ridge CTC to another school?

JumpStart programs are designed so that students complete approximately the first year of a Blue Ridge CTC associate degree. Students who intend to transfer to another institution must be aware of the specific program requirements at the receiving institution. Students should contact the receiving institution to ask about transferability of coursework. The College also has a number of transfer agreements already in place and available for review on the Blue Ridge website.

What is the WV CORE Transfer Agreement?

The WV CORE Transfer Agreement ensures that students who transfer from an in-state, public college or university to another in-state, public college or university receive credit for specified general studies courses at the receiving institution. Many of the JumpStart courses are included in this agreement.

To read the full agreement and see a list of the CORE courses specified, please visit: www.BlueRidgeCTC.edu.

Whom do I contact to see if/how my classes transfer?

Students who plan to transfer should contact the receiving institution to confirm how classes and credits will transfer to another school.

How does changing my degree program affect my credits?

Every program, regardless of school, has curriculum specific to each different major. This curriculum provides an exact list of courses required for that degree. Each program is unique. Students who change degree programs after completing courses may find they have taken courses that do not apply to the new path.

What is an articulation agreement?

Articulation agreements, also called transfer agreements, are agreements between two schools that outline what courses students may transfer with an associate degree. Blue Ridge CTC has a number of agreements in place to ensure students can easily transition after graduation.

Where can I see current articulation agreements that are already in place?

A full list of transfer agreements is available on the Blue Ridge CTC website. The College actively adds new agreements, so students should check back often.

www.blueridgectc.edu/current-students/transfer



Main Campus

13650 Apple Harvest Drive
Martinsburg, WV 25403

Technology Center

5550 Winchester Ave
Martinsburg, WV 25405

Morgan County Center

109 War Memorial Drive
Berkeley Springs, WV 25411

www.BlueRidgeCTC.edu | 304.260.4380

Virtual Camups Tour: www.BlueRidgeCTC.edu/Tour

Blue Ridge Community and Technical College is an Equal Opportunity Employer and an open admission institution. The College does not discriminate against applicants, students, employees, or participants on the basis of race, color, religion, sex, national origin, pregnancy, age, disability, genetic information, or past, current, or prospective service in the uniformed services or veteran status. Faculty, staff, students, and applicants are protected from retaliation for making complaints or assisting in investigations of discrimination. Blue Ridge CTC complies with all applicable federal, state, and local nondiscrimination and equal opportunity laws. Printed and/or electronic documents produced by the College do not constitute a contract, expressed or implied, between an applicant or student. (Viewbook Last Updated: 1.2026)

High Schoolers depicted in this viewbook are students currently enrolled in Berkeley, Jefferson, Morgan, Clarke, or Frederick County Schools.